

EXETER COMMUNITY CENTRE

Facilities and Services Brochure



01392 420549 www.eccentre.org
17 St. Davids Hill, Exeter EX4 3RG





Exeter Community Centre

Background

The Centre is a listed building of historical interest. It was first a Georgian merchant's house, and then a Victorian residential school for the blind before becoming a local authority-owned community centre for Exeter after the floods of the 1960s.

In 2010, with the Centre threatened by private development, the community of St David's raised £1.8 million in public grants and loans to buy the Centre and refurbish it. The Centre is now owned in perpetuity by a charitable trust run by local volunteers. The Trust's mission is **'to provide a space for our community to thrive'** through offering tenanted office space and sessional hire of over 18 rooms of various sizes for meeting, receptions, classes and projects as well as a training kitchen for hire.





What We Do

Room Hire

From small meetings to large conferences, training days and events, the Exeter Community Centre hires a wide variety of spacious rooms at very competitive rates. The Centre is central - just a 10 minute walk from the High Street and either of the two railway stations - Exeter Central and Exeter St David's.

Parking

We have 3 bookable parking spaces for disabled customers on site. Nearby are limited time on-street parking spaces and city centre (paying) car parks. Ask our reception staff for more details.

Dining and Refreshments

The Centre houses The Mulberry Tree Cafe which provides catering and refreshments for meetings as well as in-house light meals. The café is open Monday to Friday - 9:00am until 3:30pm and Saturday am for room catering.

Talks and Workshops

Our Centre holds many talks and workshops. For our heritage talks archive, check out our YouTube channel.



Volunteering Opportunities

Our Centre is home to many volunteering opportunities, including voluntary work within the Centre and its garden, as well as volunteer work on our heritage projects and tenants' activities.

For more information on current volunteering opportunities, please contact us or visit to discuss any upcoming possibilities.

Exhibitions

We show local and regional artists' work; in mixed exhibitions of print, painting, photography, drawing and occasionally ceramics.

We have a four month run of each exhibition and do not charge for display or request commission on sales.

Please email an indicative selection of images of your work to be considered. exhibitions@eccentre.org



What's On

Activities

External providers run a wide variety of activities from our Centre. These include health and well-being classes such as Mindfulness, Yoga and Aikido; holistic therapies including Acupuncture; language learning; creative and cultural sessions such as Choirs, Dance, Theatre or Poetry.

OPENING HOURS

Monday	8:30am - 9:30pm
Tuesday	8:30am - 9:30pm
Wednesday	8:30am - 9:30pm
Thursday	8:30am - 9:30pm
Friday	8:30am - 9:30pm
Saturday	9:00am - 5:00pm
Sunday	9:00am - 5:00pm
We close occasionally at weekends	

Our brand new Training Kitchen is now available for hire for cookery classes, demonstrations and healthy eating activities.

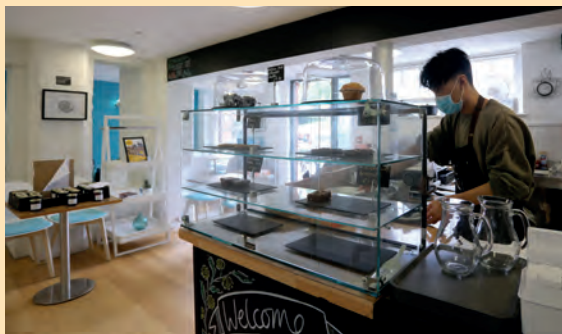
Please check our website or contact us for more details or if you wish to provide an activity in the Centre.

Events and Functions

Organisations frequently hold events in our Centre which are open to the public. These include receptions and celebrations, talks, workshops, exhibitions and other activities. See our website and social media for upcoming events and other news.

Contact Us and Online Bookings

To contact us, complete your enquiry details or booking form on our website's 'Contact Us' page.



Café and Garden

Mulberry Tree Café

Our café offers a range of seating inside and in our accessible garden outdoor space. It is independently run and offers everything from freshly ground coffee, soft drinks and homemade sandwiches to soups, paninis and daily specials. This summer the café made seasonal muffins with mulberries from our garden! The cafe also provides in-room catering and refreshments .

If catering is required for your event, please let us know when you book so that we can help make arrangements.

The Café opening times are:

Monday to Friday	9:00am - 3:30pm
Saturdays	For room catering
Sunday	Closed

Community Garden

One of the garden's most striking features is our ancient Mulberry Tree, from which the café takes its name; typical of what would have been planted in the eighteenth-century when the Centre was still a merchant's house. The rest of the garden was completely 're-imagined' and made accessible to disabled customers when the Centre was re-opened in 2012. It is now looked after by a team of dedicated volunteers.

"All year-round, our community garden shows a peaceful, green face to all who look out of the Centre's upper windows and a calm space for cafe users and everyone taking a stroll or a break."

Gina Richards (garden volunteer)



Radford Community Kitchen

Overlooking the centre garden, we have a brand new multi-purpose six station Training Kitchen suitable for a variety of purposes – from cookery classes to professional catering and social events. The Radford Kitchen can be hired out by the hour, by the half day or full day. There are two rate bands, one for community use and one for commercial use such as professional catering.

The kitchen has a preparation area, plus tables and chairs for dining or food sampling. It is fully equipped, including cutlery, crockery and glassware. A short cycle dishwasher and washing machine complete this comprehensive facility.

£28 per hour (community rate)

£42 per hour (commercial rate)





Room Hire Information

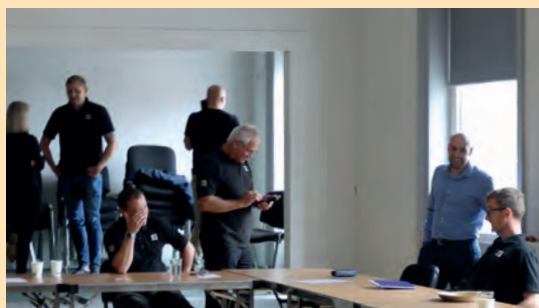
Booking a Room

We have a wide variety of rooms available to hire. Our rooms can easily be booked through our website's 'Contact Us' page or by telephone enquiry or ask our helpful reception staff. Our customers can also request and manage their room bookings online – so you can confirm or change your booking with just a few clicks!

Room Hire and Rates

We let all our hireable rooms on an hourly, half day and full day basis. See the following grid page in this brochure for the list of hireable rooms, their layout capacities and applicable rates.

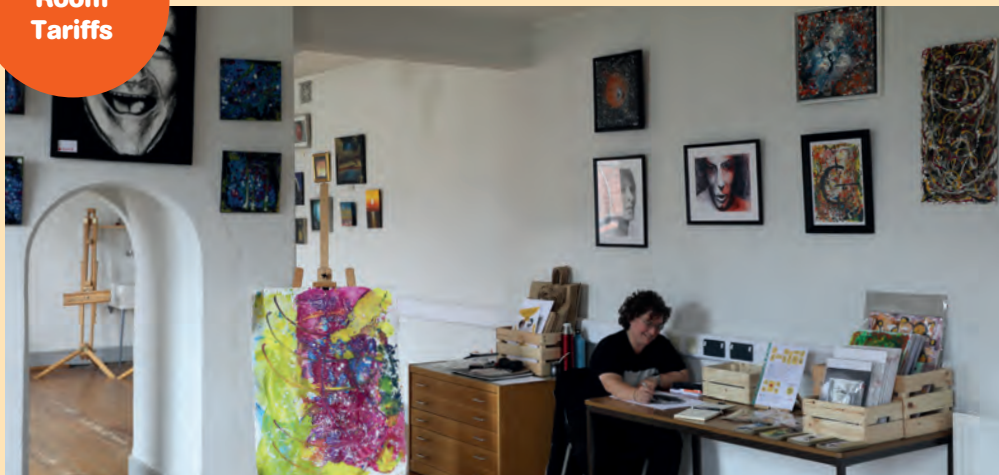
Free Wi-Fi is available throughout our Centre.



Long Term Tenancies

We have a number of room spaces in our building that we let out on short or multi-year lease basis. We are always pleased to meet potential tenants in order to discuss their requirements and arrange viewings. Devon Development Education, Refugee Support Devon, Ubuntu Counselling Network, Alliance Francaise, Devon Gardens Trust and Posture Mobility Group are some of our existing long standing tenants.

Room Tariffs

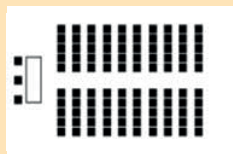


We have a total of 18 rooms available for hire and these are all listed in the grid below. Note that the room capacities depend on the table and seating layout, and any distancing requirements. Projectors and laptops may be hired and are separately charged. In-room catering is available during cafe opening hours.

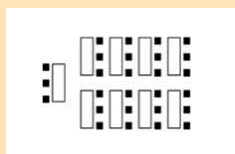
	Per hour	Per 3 hours	Per 8 Hours [Day]	Disabled access
1 Art Room	£20	£49	£109	N
2 Ballroom	£24	£60	£146	Y
3 Bonhay	£14	£31	£78	Y
4 Cowick	£17	£39	£92	Y
5 Dinham	£20	£49	£109	Y
6 Haldon	£20	£49	£109	Y
7 Heavitree	£20	£49	£109	Y
8 Isca	£17	£39	£92	Y
9 Little Silver	£17	£39	£92	Y
10 Northernhay	£22	£55	£130	Y
11 Richmond	£22	£55	£130	Y
12 Rougemont	£20	£49	£109	Y
13 Magdalen	£24	£60	£146	Y
14 Merchant's Room	£20	£49	£109	Y
15 Alphin	£18	£43	£97	Y
16 Belvedere	£20	£49	£109	Y
17 Tadiforde	£18	£43	£97	Y
18 Waterbeer	£18	£43	£97	Y



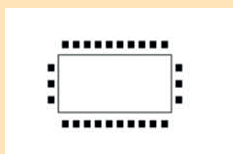
Theatre



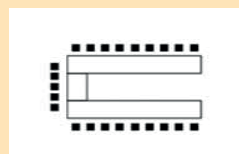
Classroom



Boardroom



U Shape



	Theatre	Class Room	Board Room	U Shape	Cabaret
1 Art Room	40(20x2)	36(18x2)	28(14x2)	28(14x2)	36(18x2)
2 Ballroom	80	30	30	30	60
3 Bonhay	-	2	8	-	-
4 Cowick	12	8	10	-	-
5 Dinham	40	16	20	20	30
6 Haldon	40	18	18	18	24
7 Heavitree	30	18	20	16	20
8 Isca	15	8	12	-	-
9 Little Silver	-	2	8	-	-
10 Northernhay	60	30	24	20	40
11 Richmond	40	30	20	12	30
12 Rougemont	30	12	16	20	20
13 Magdalen	80	30	30	30	60
14 Merchant's	16	10	20	16	14
15 Alphin	15	8	12	-	-
16 Belvedere	16	10	20	16	14
17 Tadiforde	15	8	12	-	-
18 Waterbeer	17	10	14	-	-



The Ballroom

The Ballroom has a wooden floor with four large windows that open fully. The Ballroom is fully accessible and can comfortably accommodate between 30 to 70 people, depending on distancing and table layout. Adjacent to the Ballroom is the Cowick room, which can form an ideal break-out room and is often used for refreshments and buffet style lunches. Ideal for conferences, large group meetings, choirs and exercise classes



Heavitree

The Heavitree room is carpeted, with two large windows that open fully. Heavitree is fully accessible and can accommodate between 12 to 30 people, depending on distancing and table layout. The shape of the room lends itself well to a U shaped table arrangement – suitable for medium sized group meetings and training sessions.





Merchant's Room

One of the smaller rooms in the centre, the Merchant's room is suitable for 8 to 15 people depending on distancing and table layout. Completely refurbished with a redwood pine floor and historical wall and floor viewing panels, the space is both atmospheric and intimate.



Magdalen

The Magdalen room is a large space, similar in size to the Ballroom and features an original stripped wooden floor and large windows that can be opened. Part of the recently refurbished second floor, the fully accessible Magdalen features an integral kitchenette with kettle and fridge. The adjacent Magdalen annexe is ideal as a break-out room and can be used for refreshments and buffet style lunches. Suited to conferences, large group meetings, choirs and exercise classes. Situated on the second floor this room is a quiet and contained space.

How to Find Us



01392 420549
www.eccentre.org
17 St. Davids Hill,
Exeter EX4 3RG

Supported by

